

Modular cabling with the FPM-series

The FPM-series includes pluggable modules mounted in a 1U or 3U frame. This gives a flexible solution that easily may be expanded as the needs grow.

- 3 modules in 1U frame or 12 modules in 3U frame
- White aluminium
- LC Optical interface
- Single mode fibre
- Delivered with adapters, with adapters and pigtails or with pre-terminated cable
- 3 different types of cable suited for Norwegian climatic conditions



Capacities

The module is delivered with a front for 6 LC Quad adapters that gives a capacity of 24 LC-connectors. The modules are plugged into a 1U frame (3 modules) or a 3U frame (12 modules).

Frame size	1U	44H x 19" x 240D
	3U	133H x 19" x 240D
Module capacity	24	LC
Total capacity	72/288 LC	1U/3U frame



3U frame with modules



1U frame with modules



Module with 6 LC Quad adapters

Optical specifications

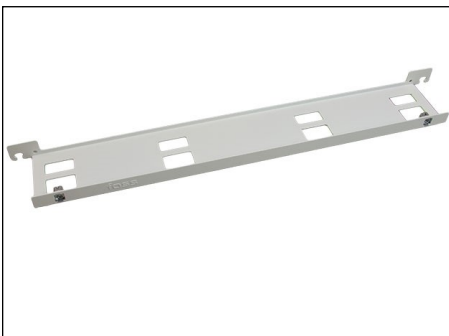
Fibre type	Insertion loss	Return loss	Standard
Single mode	< 0.5 dB at 1310/1550 nm	< -45 dB at 1310/1550 nm	IEC 61755-1 class: C2 for PC
		< -60 dB at 1310/1550 nm	C1 for APC

Cable

The FPM series is delivered with cable type AXAI (indoor), type QXXI (indoor/outdoor) or micro cable (NANO) for outdoor use.

Secondary coating	Tight buffer for AXAI	
	Loose tube for QXXI and NANO	
Fibre type and cable colour	Single mode ITU-T G.657A1 (AXAI, QXXI)	Yellow
	Single mode ITU-T G.652D (NANO)	Black
Outer diameter cable	5.2/6.0/6.9/8.7 mm	4/8/12/24 AXAI
	10.5/10.5/12.0 mm	12/24/48 QXXI
	6.0 mm	24/48 NANO
Colour code AXAI, Norwegian	Fibre 1-12: White, red, yellow, green, blue, grey, brown, black, violet, aqua, orange, pink. Fibre 13-24: White, red, yellow, green, blue, grey, brown, black, violet, aqua, orange, pink. All with black speckles.	
Colour code QXXI, NANO, Norwegian	Fibre tube: Red, green, white (beside green), then all white. Fibre: White, red, yellow, green, blue, grey, brown, black, violet, aqua, orange, pink.	
Temperature range	Operation: -40 °C to 70 °C (AXAI and QXXI); -30 °C to 70 °C (NANO) Installation: -10 °C to 60 °C	
Fire class cable	AXAI: Dca-s2, d2, a1 QXXI: Eca NANO: Outdoor use only	

Accessories



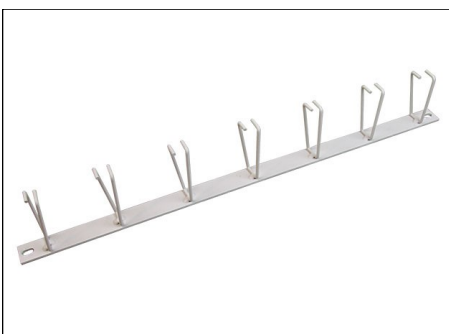
FP70301 - Cable guide, 0.5U



FP70361 - Cable guide, 1U



FP70325 - Storage unit, 2U



02-NCD513 - Cable guide II, 0.5U

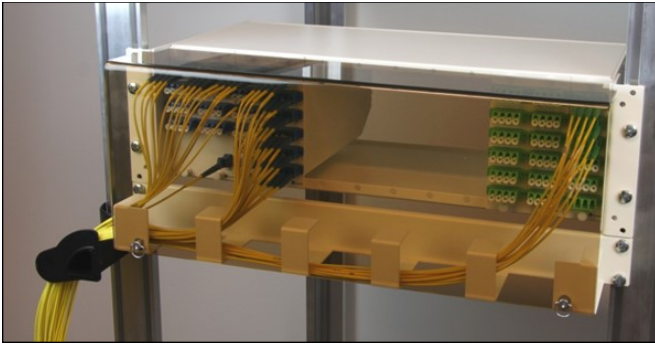


FP70333 - Cover, panel/storage unit, 3U

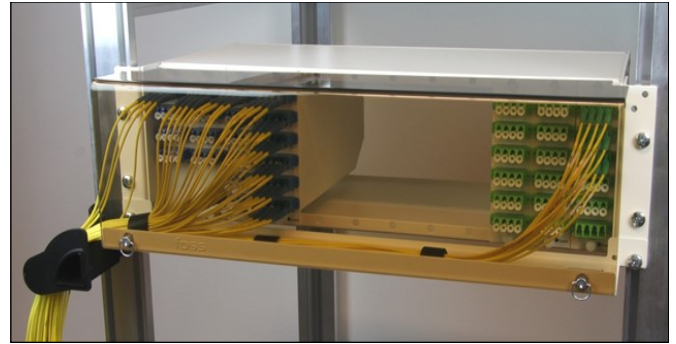


FP70334 - Cover, panel/storage unit, 4U

Galleri



3U frame with modules, 1U cable guide and 4U cover



3U frame with modules, 0.5U cable guide and 3U cover

Article numbers panel

FPM76100	Panel, modular, 12-slot, 3U
FPM76105	Panel, modular, 3-slot, 1U
FPM76106	Lid, 1U panel
FPM76190	Blinding plate, 1-slot

Article numbers with cable type AXAI

FPM76-4SLC-xxx	Modul, 4 LC/PC, 9/125, AXAI, xxx m
FPM76-8SLC-xxx	Modul, 8 LC/PC, 9/125, AXAI, xxx m
FPM76-12LC-xxx	Modul, 12 LC/PC, 9/125, AXAI, xxx m
FPM76-24SLC-xxx	Modul, 24 LC/PC, 9/125, AXAI, xxx m
FPM76-4SLCA-xxx	Modul, 4 LC/APC, 9/125, AXAI, xxx m
FPM76-8SLCA-xxx	Modul, 8 LC/APC, 9/125, AXAI, xxx m
FPM76-12LCA-xxx	Modul, 12 LC/APC, 9/125, AXAI, xxx m
FPM76-24SLCA-xxx	Modul, 24 LC/APC, 9/125, AXAI, xxx m

Article numbers with cable type QXXI

FPMQ76-12SLC-xxx	Modul, 12 LC/PC, 9/125, QXXI, xxx m
FPMQ76-24SLC-xxx	Modul, 24 LC/PC, 9/125, QXXI, xxx m
FPMQ76-48SLC-xxx	Modul, 48 LC/PC, 9/125, QXXI, xxx m
FPMQ76-12SLCA-xxx	Modul, 12 LC/APC, 9/125, QXXI, xxx m
FPMQ76-24SLCA-xxx	Modul, 24 LC/APC, 9/125, QXXI, xxx m
FPMQ76-48SLCA-xxx	Modul, 48 LC/APC, 9/125, QXXI, xxx m

Article numbers with cable type NANO

FPMR76-24SLC-xxx	Modul, 24 LC/PC, 9/125, NANO, xxx m
FPMR76-48SLC-xxx	Modul, 48 LC/PC, 9/125, NANO, xxx m
FPMR76-24SLCA-xxx	Modul, 24 LC/APC, 9/125, NANO, xxx m
FPMR76-48SLCA-xxx	Modul, 48 LC/APC, 9/125, NANO, xxx m



2-slot module with 48 LC-connectors

Requires double module (2-slot)

Requires double module (2-slot)

Requires double module (2-slot)

Requires double module (2-slot)